

Wave Desktop 2.6 Read Me



Introduction

Use this document to install or update Agilent Seahorse Wave Desktop software on your personal computer. The procedure for upgrading an existing version of Wave Desktop software is the exact same as installing it for the first time. For comprehensive documentation of features and how to use Wave Desktop, please refer to the [Agilent Seahorse Wave User Guide](#).

The primary functions of Wave Desktop software are:

- Data analysis – Import and analyze assay result files (*.asyr) generated by Agilent Seahorse XFe24, XFe96, XFp Analyzers, and XFd (*.xfd) files generated by Agilent Seahorse XF24 & XF96 Analyzers.
- Assay design – Create custom assay template files for XFe and XFp Analyzers. Assay templates files are not compatible with XF24 and XF96 Analyzers.
- Wave Desktop must not be installed on XF, XFe and XFp Analyzers.

PC Requirements

Computer	Specifications
Windows PC	Operating System: Windows 7, 8.1, and 10 Processor: Intel Core i3 (or better) Hard Disk Space: 175 GB System Memory (RAM): 4 GB (minimum*) Screen Resolution: 1280 x 800 (minimum) Supported Excel Versions: 2010, 2013 & 2016
Macintosh PC	Operating System: Mac OSx 10.11 or higher Processor: Intel Core i3 (or better) Virtual Machine: Parallels 12 & Windows 7, 8.1 and 10 Hard Disk Space: 175 GB System Memory (RAM): 4 GB (minimum*) Screen Resolution: 1280 x 800 (minimum) Supported Excel Versions: 2011 & 2016

**For the optimal experience, 8 GB (or higher) of System Memory (RAM) is recommended.*

- **Microsoft .NET Framework 4.6.1:** To install/upgrade to Wave Desktop 2.6, Microsoft **.NET Framework 4.6.1** must first be installed (minimum). If **.NET Framework 4.6.1** is not detected during install/update, Wave will automatically install it**. If the Microsoft .NET update fails, manually download & install version 4.6.1 by visiting the Microsoft webpage: <https://www.microsoft.com/en-us/download/details.aspx?id=49982>
- **Administrator Privileges:** To check your Windows User Account permissions, click the Windows® **Start** button > **Control Panel** > **User Accounts** > **Manage User Accounts**. You may be prompted to provide the administrator password. If the "Group" does not equal Administrator, then your account does not have administrator privileges. Contact your local IT administrator for further assistance.
- **PDF Reader (Adobe Reader XI):** If a PDF reader is not detected during install/update, Wave will offer to install Adobe Reader XI. If you prefer an alternate PDF reader program, decline the Adobe Reader XI install prompt.

Other Important Information

1. Do **NOT** uninstall the previous version of Wave Desktop before upgrading to 2.6.
2. After completing the install/update, restart your PC.
3. If you have a Wave Desktop version **earlier** than 2.0, please contact Agilent Seahorse Technical Support for assistance. Do **NOT** attempt to update to version 2.6.
4. Any Seahorse files with the file extension ***.asy** must be converted to the appropriate file format before they can be opened and viewed in Wave Desktop 2.6. Contact Technical Support before upgrading to Wave Desktop 2.6.

Download Wave Desktop 2.6

1. Open an internet browser and navigate to: [www.agilent.com/en-us/products/cell-analysis-\(seahorse\)/software-download-for-wave-desktop](http://www.agilent.com/en-us/products/cell-analysis-(seahorse)/software-download-for-wave-desktop)
2. Complete the required fields on the registration form, then click **Submit**.
3. On the next webpage, click the orange **Download** button to download a compressed folder containing the Wave Desktop 2.6 installer file (Setup.exe).

Installation

1. Right-click on the compressed folder and click **Extract All** to unzip the folder, then double-click the file called **Setup.exe** to begin installation (Figure 1).

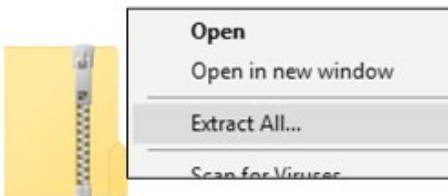


Figure 1.

2. If you are installing Wave Desktop software for the first time, click **Next** on the **Welcome to Wave** window (Figure 2a). If you are updating your Wave Desktop software, click next on the **Ready to Update** window (Figure 2b).



Figure 2a.



Figure 2b.

3. Review the License Agreement and accept the terms. Click **Next** to continue (Figure 3).

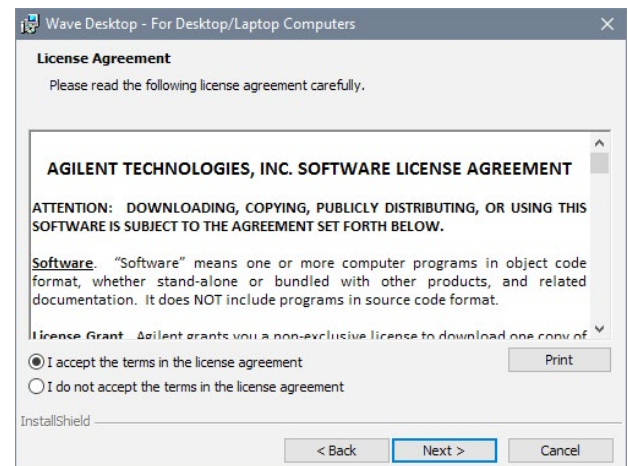


Figure 3.

- Select the Agilent Seahorse Analyzer(s) that will be used with Wave Desktop on the **Choose Instruments** window. At least one analyzer must be selected to proceed, then click **Next** (Figure 4).



Figure 4.

- Click **Install** on the **Ready to Install** window (Figure 5).

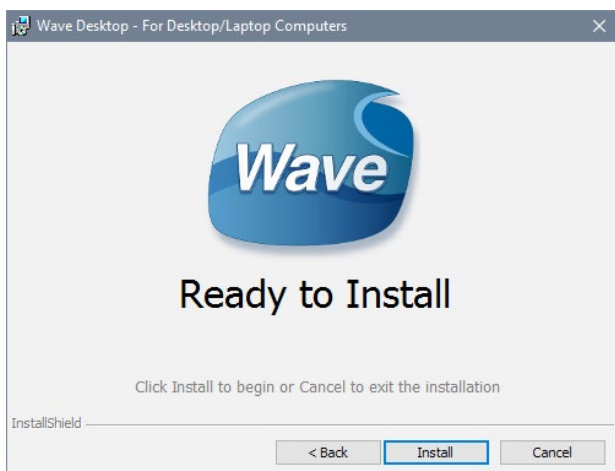


Figure 5.

- After completing installation, the installer will display the **Installation Complete** window. Click **Finish** to complete installation (Figure 6).



Figure 6.

Verify Successful Install & Update

Confirm the software update to Wave Desktop 2.6 was successful:

- Open Wave Desktop 2.6 by double-clicking the Wave icon on the **Desktop**.
- When Wave **Home** appears, click the Help button on the left-side navigation.
- Confirm the software version is 2.6 (Figure 7).

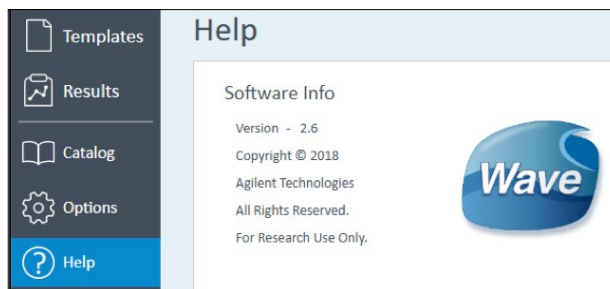


Figure 7.

Automatic Wave Software Updates

Wave Desktop detects and downloads Wave updates automatically. After releasing a Wave Desktop update, the next time you open Wave Desktop, an Update Available prompt will appear (Figure 8).

- New updates are not automatically installed.
- The PC must have an active internet connection to download Wave updates.

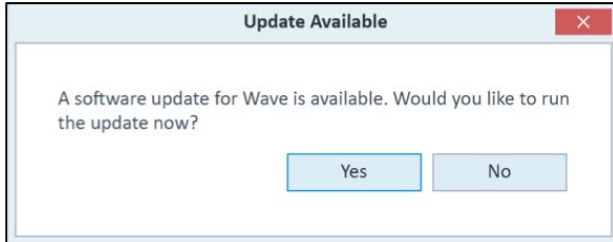


Figure 8.

Add/Remove Instrument License Files

Based on the instrument selection during installation/update (Figure 4), Wave Desktop will only open assay result and assay template files for those selected instruments. If you try to open a Seahorse file but encounter the "Instrument not installed" error message (Figure 9), you can add the instrument license by following the steps below:

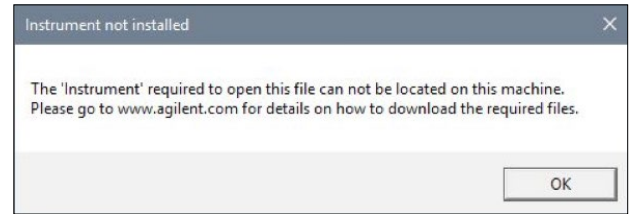


Figure 9.

To change the instruments configured for use with Wave Desktop:

1. Close Wave Desktop.
2. Click the Windows® **Start** button, then **Control Panel > Programs and Features**.
3. Right-click on Wave Desktop, then click **Change**.
4. Click **Next** on the *Seahorse Wave Maintenance* window.
5. Ensure the **Modify** option is selected and click **Next**. This wizard allows you to modify the XFe and XFp Analyzers that can be used with Wave Desktop as well as reconfiguring the *Automatic Updates* option.

www.agilent.com/chem/discoverxf

For Research Use Only.
Not for use in diagnostic procedures.

This information is subject to change without notice.

© Agilent Technologies, Inc. 2018
Printed in the USA, March 19, 2018
57891-10000 Rev B